

TLD950 MultiHead Dimensioner

Setting New Standards



Highest Read Rate

Large optics combined with refined software solutions guarantee best measuring results. The widest dynamic range allows measuring on the most challenging reflective and light absorbent surfaces. The result is the highest read rate for maximum revenue recovery and reduced manual handling.



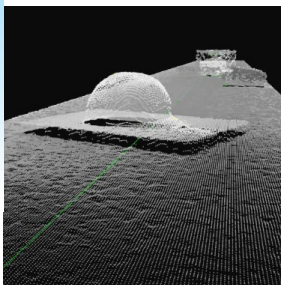
Embedded Processing Power

Software for data processing, alibi data storage and host communication runs inside the dimensioner. That keeps the solution and installation lean and reduces costs. The CPU power provided enables the TLD950 for high-speed applications.



Secure Connectivity

Barcode readers, cameras, scales and sorters can be directly connected to the TLD950. Embedded OCTO DataCapture™ Software manages data merging from all components, transforming your dimensioner into a turn-key data capture solution. Secure connectivity ensures a data safety and system protection.



Design for Service & Uptime

Embedded onboard diagnostic enables health monitoring and ability to identify downtime events proactively. Design quality and service features work together to ensure uptime. The robust design requires very little maintenance.



TLD950 Dimensioner

Superior Measuring Performance

With improved precision, larger optics and a powerful, embedded processor, the TLD950 provides the highest read rates and precision in its class for fully automated material handling as well as maximum revenue recovery.

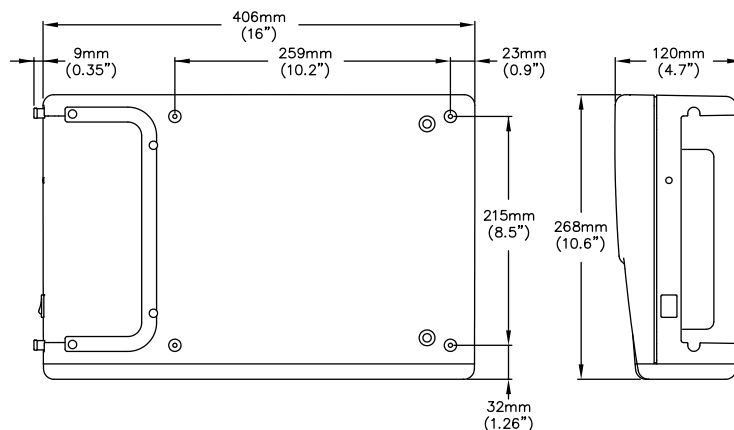
At home in any sorting environment, the TLD950 measures accurately on standard conveyors and cross belts at high speeds. Seamless connectivity to barcode readers, scales, sorters and cameras make the TLD950 the answer to optimizing operational standards and preparing for future investment in local and global hubs.

TLD950 MultiHead Dimensioner

Dynamic Parcel Dimensioning

Features and Benefits

- Large, highly effective optics for maximum precision and read rate
- Powerful embedded processor - no external IPC / computer
- Directly connects with bar-code readers, cameras, scales and sorters
- Measures accurately at high and low speeds
- Forward and reverse measuring
- Detects and reports touching items to aid package flow
- Side by side detection and measuring
- Provides orientation data for correct sorting and tracking
- Secure data connectivity and data transfer to customer host
- Onboard diagnostics for effective service and simple upgrades
- Intuitive user interface for quick system configuration, statistics and status reports
- Certified Legal-For-Trade measurements for objects down to 50 x 50 x 20 mm
- Complies with international technical standards



Legal-for-Trade Approvals

| Specifications | NTEP | Measurement Canada | MID |
|---------------------------|--|-------------------------------|--------------------------------|
| Minimum Size (L x W x H) | 2.4" x 2.4" x 1.2" | 2.4" x 2.4" x 1.2" | 50 x 50 x 20 mm |
| Maximum Size (L x W x H) | 157.4" x 63" x 43" | 158" x 63" x 47" | 4000 x 1600 x 1200 mm |
| Certified Scale Value (d) | d=0.2" (L x W), d=0.1" Height | d=0.2" (L x W), d=0.1" Height | d=5 mm (L x W), d=2 mm Height |
| Accuracy | 0.2" (L x W), ± 0.1" Height | 0.2" (L x W), ± 0.1" Height | ± 5 mm, (L x W), ± 2 mm Height |
| Object Shape | Cuboidals and irregular shapes | | |
| Object Surface | All surfaces | | |
| Belt Speed | 0 - 655 ft/min | 0 - 655 ft/min | 0 - 3.3 m/s |
| Speed Variable | Variable speed from 0 - 3.3 m/s (655 ft/min) | | |
| Conveyor Type | Flat conveyor belt, cross-belt | | |
| Belt Width | 600 - 1600 mm (24" - 63") | | |
| Flow | Singulated flow | | |
| Display | Host output, OCTO CSM, LFT display, HDMI monitor | | |
| Power Supply | 24 VDC, 100 VAC to 240 VAC | | |
| Sealing | Electronic sealing | | |

*Minimum gapping required

| Enclosure / Environment | |
|--------------------------------|--|
| Housing Material | Aluminium |
| Operating Temperature | -10 to +50°C (14 to 122°F), start condition 0°C (32°F) |
| Humidity | Up to 100%, non-condensing |
| Level | -2000m / NN Indoors |
| Aperture angle | 82° |
| Power | 24 VDC ± 15% |
| Power Consumption | 40 W |
| Fuse | ATO/FKS 4A |
| Product Dimensions (L x W x H) | 12 x 41 x 26 cm (5" x 16" x 10") |
| Weight | 9 kg (20 lbs) |

| Regulatory Compliance / Approvals | |
|-----------------------------------|-------------------------------------|
| Light Source | Laser diode, red, wavelength 660 nm |
| Laser | Class II (2) |

| Data Interfaces | |
|-----------------|--|
| Connectivity | HDMI, 6 x USB, 2 x Ethernet, Tacho In, Tacho Out, Serial, Binary I/O |

METTLER TOLEDO Group

Transport and Logistics
Local contact: www.mt.com/transport

Subject to technical changes
©02/2022 METTLER TOLEDO. All rights reserved
30526934

www.mt.com/TLD950

For more information